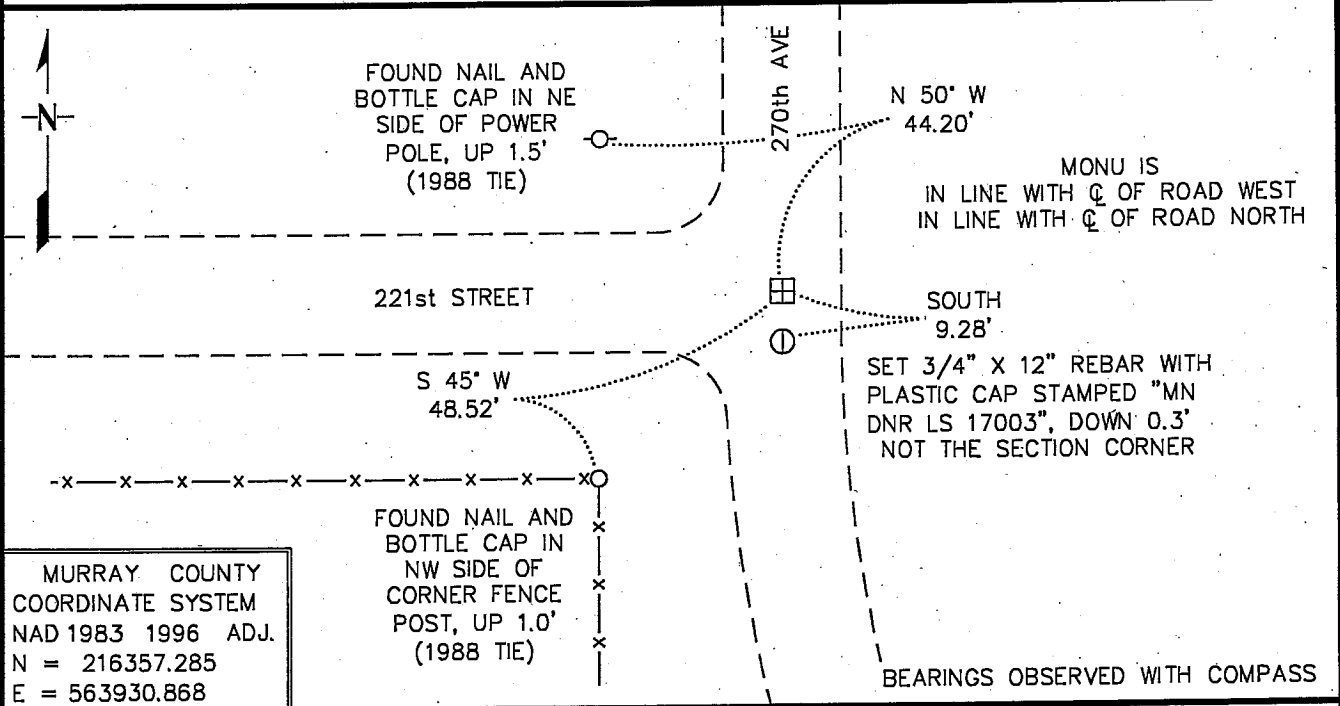


# CERTIFICATE OF LOCATION OF GOVERNMENT CORNER

NORTHEAST Corner of Section 16, Township 108 N, Range 39 W  
5th Principal Meridian, State of Minnesota, County of MURRAY

At the corner location shown on the sketch:

- On 7/28/2009 found a 12" X 6" X 12" STONE, DOWN 1.5'  
DATE
- left monument as found,     lowered monument,     removed monument (explain)
- On 7/28/2009 Placed a 3/4" X 16" STEEL PIN WITH PLASTIC CAP STAMPED  
DATE  
"MN DNR LS 17003", DOWN 0.3', OVER STONE



Statement of evidence for this corner location is on back of this page. 8/31/2009  
TRA00706.00.00.01

I certify that this document was researched and prepared by me or under my direct supervision.

SIGNATURE *Deuce W. Shippert* DATE 9/14/09 License Number 17003

Title:     Land Surveyor     Professional Engineer     County Surveyor     County Engineer

The DNR Division of Lands and Minerals contacted the following for survey information:

Minnesota History Center in St. Paul  
Murray County Recorder's Office  
Murray County Highway Engineer's Office  
Zieske Land Surveying, Inc. of Windom  
Bueltel-Moseng Land Surveying of Marshall

- 1861 U.S. General Land Office notes, obtained from the Minnesota History Center, show the corner marked with a wood post with pits and mound.
- 1898 December 22, Surveyor's Record Book A, Page 114, obtained from the County Recorder's Office, contains a survey in Section 15 by J.W. Woolstencroft. Survey shows corner but does not indicate what kind of monument was found or set and no distances to adjoining section or quarter corners are shown.

The above information is also contained in a Surveyor's Record Book, obtained from the County Highway Engineer's Office.

- 1899 June 19, Surveyor's Record Book A, Page 85, obtained from the County Recorder's Office, contains a survey in Section 9 by J.W. Woolstencroft. Survey states the following about the corner:

"iron stake 1"

Survey does not indicate if the iron stake was found or set. The corner is shown:

2660 feet from the south quarter corner of Section 9

2647 feet from the east quarter corner of Section 9

The above information is also contained in a Surveyor's Record Book, obtained from the County Highway Engineer's Office.

- 1899 June 19, Murray County Highway Department section corner information website, states that a 1" iron stake was located at the corner. The following is also noted:

"call for more details"

- 1901 Surveyor's Record Book A, Pages 240, 248, 249 and 254 obtained from the County Recorder's Office, contains a survey by D.L. Bighorn, Redwood County Surveyor, which record was made on June 12, 1915, by J.R. Johnston, Murray County Surveyor, from original plat on file in the office of the Town Clerk of Holly Township. Survey shows "govt corner" symbol at corner but a description of a monument is not given. The corner is shown:

2646.8 feet from the south quarter corner of Section 9

2645.5 feet from the east quarter corner of Section 9

2645.6 feet from the north quarter corner of Section 10

2645.6 feet from the east quarter corner of Section 16

The above information is also contained in a Surveyor's Record Book, obtained from the County Highway Engineer's Office.

1915 June 19, Surveyor's Record Book A, Pages 277 and 278, obtained from the County Recorder's Office, contains a survey by J.R. Johnston, Murray County Surveyor. Survey states the following about the corner:

“stone set previously and located by testimony of old residents”

The corner is shown:

2656 feet from the north quarter corner of Section 15

The above information is also contained in a Surveyor's Record Book, obtained from the County Highway Engineer's Office.

1988 April 18, Murray County Highway Department section corner information website, states that a field stone was located at the corner, 18 inches below gravel surface, a 3/4" x 16" steel pin was set over the high point of the stone and the following ties were taken:

N&C in telephone pole, northwest, 44.15 feet

N&C in wood corner fence post, southwest, 48.24 feet

The following is also noted:

“call for more details”

2009 July 28, the DNR Division of Lands and Minerals hired a backhoe to dig for evidence of the corner. A 3/4 inch by 16 inch long steel pin was found 0.1 of a foot below the surface over a 12 inch by 6 inch by 12 inch stone, with a wood lath on its east edge, which were found 1.5 feet below the surface. Continued digging to a depth of 4 feet but no other evidence of a monument was found. Also, scanned the bottom of the excavation with an electronic metal detector but no metal attraction was obtained. The excavation was 4 feet north-south by 4 feet east-west by 4 feet deep the center being at the intersection of the centerline of roads north and west. During the excavation, natural ground was encountered at a depth of 2.0 feet. The 12 inch by 6 inch by 12 inch stone and lath were reset as found and a plastic cap stamped “MN DNR LS 17003” was set on top of the 3/4 inch by 16 inch long steel pin, which was reset over the stone and found it to be:

at the intersection of the centerline of roads north and west

2658.68 feet from the north quarter corner of Section 16

5293.46 feet from the southeast corner of Section 16

Searched for and found record ties as shown on the sketch of reference ties.

Consulted with LaMoine Meyer, Holly Township Clerk, about the 1901 survey by D.L. Bighorn, and he said that the survey information that the Township has is the same as what's on file at the County Recorder's Office.

Analysis of the above information led the DNR Division of Lands and Minerals to conclude that the 3/4 inch by 16 inch long steel pin with a plastic cap stamped “MN DNR LS 17003”, which was set over a found 12 inch by 6 inch by 12 inch stone marks the location of the corner.